



Things Past

Newsletter 135

November 2024

Wurundjeri Country

PO Box 289 Mt Evelyn Vic 3796

Incorporation Number A0051327F

Dates for Your Diary

Christmas Breakup and final (brief) meeting, Saturday 30th November at home of Mary and Glenn Golds, 3 Bligh Court, Lilydale. 1:30pm. Please bring a small plate for variety but some catered food will be provided.

General Business Meeting, Monday 10 February, 7.30 pm, at Hardy House, to finalise meeting with Association of Eastern Historical Societies (AEHS), 49 Birmingham Road, Mt Evelyn.

Association of Eastern Historical Societies (AEHS), Saturday 15th February 2025, at Hardy House, 49 Birmingham Road, Mt Evelyn. Assistance with serving afternoon tea would be appreciated. Interested members welcome to attend talk on *Local History for the Future*.

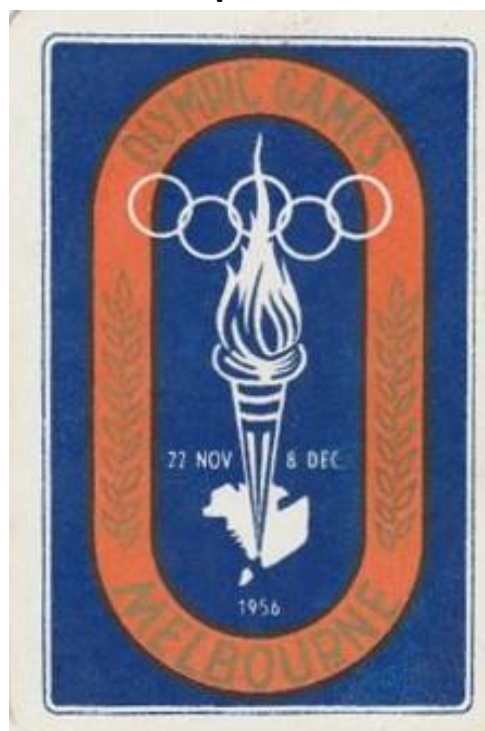
Tour of Yarra Ranges Regional Museum Saturday 15th March 2025. Details TBA.

Meetings are 3rd Mondays of even months, 7:30 pm at Hardy House for General Business Meetings, and speaker and activity times are on alternate months at times by arrangement - please check your email inbox.

In This Issue...

Melbourne Olympics	
Memorabilia Swap Cards	1
Melbourne Olympics Memorabilia	3
The Mt Evelyn Lions Club Train	4
Bricks Revisited	5
The Opening of the National Fitness	
Camp in 1951	6
Italian Heritage in the Yarra Valley	7
Wandin Railway Station Mural	
Project	8
Vale Sam Abounajm, 'Amigo' to All	8
Vale Ann Buckmaster	9
Vale Jack (John Charles) Hibberd	10
Nan Yaxley's <i>Christmas at Billygoat Hill</i>	10
Employees Associated with the	
David Mitchell Cave Hill Estate	
D — G	11
Eyewitness Account of the Mayor of	
Billygoat Hill	12
From Kev's Rain Gauge	12

Melbourne Olympics Memorabilia Swap Cards



cont p 2

Melbourne Olympics Memorabilia: Swap Cards



Several readers have commented that they still have some of the 1956 Swap Cards. This has inspired me to write about those still in my collection.

I was seven at the time of the Melbourne Olympics, and was fortunate to have a grandmother and aunt who took me into Melbourne regularly and purchased a few of the collectors' Olympic swap cards for me from Coles. I was one of the first to have one at my school at Yarra Glen, and they were admired and criticised.

Criticised because they were manufactured for collectors, rather than from packs of 'real' cards, and admired for the designs. We were being encouraged to be very patriotic and the cards of the members of the British Commonwealth were favoured because of the Union Jack in their flags.

But to even see coloured drawings of countries we had never heard of was a revelation. My family had close ties with the USA as my mother had been engaged to marry an American Marine in World War II, who had been killed in the Battle of the Coral Sea. She wrote regularly to his family all her life and had received some Golden Rod seeds in the mail (Border Security is shuddering at this point) which were always planted in our garden in Yarra Glen. The American card featured Golden Rod as America's national flower, and I felt very special to know it already and to have it growing at home.

I obtained 29 cards, but never came close to having a full set. Other students soon passed me in numbers. Numbers of cards in such sets were counted, not

counting repeats, and the person with the most cards was the school 'winner', much feted and sought after to show their cards to others.

The cards illustrated in the top row are the basic 'Australia' card, followed by its reverse; the arch shaped 'Exclusive Coles Production' was always checked if a card's provenance was suspected!

The main flag set was the set most coveted, but towards the end of the craze, the cards from the other sets such as a scene from a country (eg New Zealand) or of the general events (swimming) became more common.



I was also keen to obtain any 'real' swap cards from playing packs that came my way, and the most popular and common such card was the one at the centre of the top row. It took me a long time to get its 'Pair', at top left. 'Pairs' were always sought after in swap card collecting.

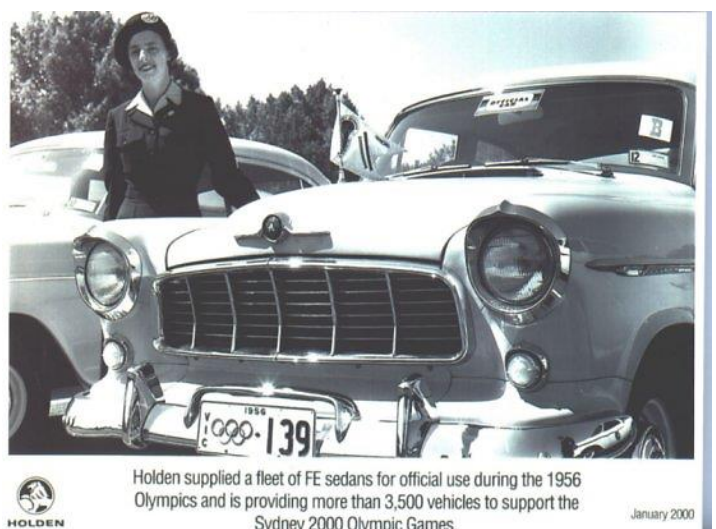
The John Englander text at the bottom right is the reverse of the blue and tan card at the top right, and shows the symbol used on the Coles cards. It explains that the design is reproduced under an exclusive right and warning against its misuse.

The card at the extreme right of the middle row shows the Olympic Swimming Pool, a source of pride in 1956. It was a great thrill to go there in the 1960s as a supporter with Lilydale High School to the Inter School Swimming Sports.

Paula Herlihy

Melbourne Olympics Memorabilia

John Keane sends two pictures of interest, from a friend, name withheld by request. An Olympic plate, and a nice photo of a plate on an FE Holden with the 'driver lady' in uniform.





The Mt Evelyn Lions Club Train

Thanks to Robbie Reed, Leanne Groen and Bev Watkins for contacting us with information about the small train which ran behind the Sunday Market building in York Road (where IGA car park is now located).

The Sunday Market was run by the Mt Evelyn Lion's Club as a fundraiser for the Melba Centre and Rosine, and the train was an initiative of the Lion's Club. It was set up by Lion's Club members and ran every Sunday on Market Day for about 2 - 3 years. The train was very popular and was always full of children.

Fred Smith is remembered as the main driver, but it was supervised by different Lions over those years. Names that were put forward, in addition to Allan Watkins, Alf Luck, Fred Smith and Robbie

Reed, were Bill Van Den Akker, Ted Fairweather and Geza Hell. The tracks were in place permanently but the train was stored in the



lockup shed at the back of the Sunday Market building when not in use.

The train was collected from Maryborough by Allan Watkins and Alf Luck over a weekend. It was petrol powered and professionally made with about six carriages.



Sadly we have not located a photo of the train yet. We have no

information on its origins, or where it went from Mt Evelyn.

PAGE 8—The Sun Easterly Supplement, Thurs., July 22, 1982



EVERY Sunday come rain or sunshine, a large barn at Mt Evelyn becomes one huge shopping centre.

It's the Sunday Market, open from 9 a.m. to 4 p.m., and run purely for charity, for the Melba Centre.

Row upon row of trestles hold a host of bargains. Goods ranging from an autograph book to bootees, records, cutlery and second-hand clothes.

Or perhaps plants, pin cushions and pets.

You can buy an edition of The Girls' Own Paper, dated 1900 when the price was one penny, old editions of Table Talk or coins of pre-metric days.

Volunteers, like manager Allan Watkins, and Mrs Eileen

McDuff who runs the special Melba stall, help to make this market a going concern.

You can help too, by donating second-hand clothes, books, furniture — any of those household articles just taking up space in cupboards and closets.

If you are in the district, the articles can be picked up. Just ring the centre on 736-1555.

Bricks Revisited

The Montrose Town Centre has enlarged the display on Montrose bricks in a display case adjacent to the reception area.



John Keane writes, 'If you have a look at the walls around the Montrose garden beds outside the Library and the war memorial you will find



Decorative band of Montrose bricks at the War Memorial and Bus Stop. Photographs by Paula Herlihy.

a decorative band of Montrose bricks running through them.'

John adds, 'Speaking of Olympic bricks I have a story

from the wilds of East Gippsland that was related to me.

It appears that

one night a house caught fire and by the time the local CFA got there it was all over, only the four exterior brick walls were still standing.

However a little while later it was discovered that the walls were made using 'Olympic' bricks. Needless to say it wasn't long before the walls started to vanish as the word got around about the type of bricks used! True story!'

John invited us around to photograph some other bricks in his personal collection. He has a Glen Iris

Olympic brick, 1954 and 1957 Glen Iris Royal Tour bricks, and some other Montrose brickworks products.



Interestingly, the Montrose brick shown above has the letter 'N' in 'MONTROSE' mirror-imaged in error.



John commented that the current works on the Montrose roundabout discovered narrow gauge

cont p 8

The Opening of the National Fitness Camp in 1951

On the 14th April 1951 St Mark's Holiday Home adjacent to the Mt Evelyn Recreation Reserve became the first permanent camp to be controlled by the National Fitness Council, purchased through two Commonwealth Grants of £9000 and £3500.¹ As a quasi-government body, the National Fitness Council could not own property without legislation to that effect, so after some see-sawing between Commonwealth and State, the Lands Department undertook to become the official purchaser.² Settlement with St Mark's and the Anglican Trust was effected on 7 March 1951 and the name of the camp changed to the 'National Fitness Camp'.³

The grand opening, a few weeks later than previously scheduled (which had the Prime Minister listed as officiating), provided a spectacle that sheds light on popular youth organisations and sports of the day.⁴ Cubs were on parade, and the City Newsboys Gymnasium, the East Kew Central School Band, the St Kilda Life Saving Club, the YWCA and the National Fitness Young Fencers and Folk Dancers demonstrated their skill to the PM's substitute, Lieutenant-General Sir Stanley Savage.

Reflecting upon the City Newsboys Gymnasium takes us back to a time when the streets of Melbourne were well-populated with child workers: young boys selling newspapers.⁵ The Melbourne Newsboys Club was founded in the Depression era of 1893. Miss Edith Onions, daughter of wealthy Anglicans, began volunteering in 1896 at the Newsboys Try Society and eventually had a following of 15,000 boys.



The Newsboys class taught by Edith Onions in 1897. See also Michelle Smith thesis: *Edith Onions, A Biography*.

In the early days they were often barefoot and homeless and by the 1940s still worked 4.30 to 6.30 pm up to six nights a week and worked to help support their struggling families. They jumped on and off trams and dealt with drunks and predatory men, becoming 'tough and self-reliant'. The Melbourne Newsboys Club provided friendship and shelter. By the 1940s and 50s it also provided second hand clothes, school lessons, a hot meal for a penny, medical help and haircuts as well as school lessons. The club building included a gymnasium where basketball matches were held of a Wednesday night.

Savage opened the camp and welcomed official guests. The camp facilities included a recreation hall, chapel ('a small sanctuary divided from the hall by a curtain'),⁶ canteen, swimming pool and bitumen tennis court, plus sleeping quarters for 70.⁷ The Lilydale Shire Council had given permission for a sign at the entrance.⁸

When Mr J O'Driscoll, a member of the camp committee of the National Fitness Council, spoke at the opening of the need to give the younger generation 'something to work for' as 'Communism was not to be defeated by preaching alone',⁹ he revealed a concern with the growth of

¹ *The Age* 16 October 1950, DYSR, File 50/1/7, code 34509, Box H71, 3237F051. For several years camps had been held under permissive occupancy of the Point Lonsdale army camp. This was closed in 1946. *The Argus* 17 Oct 1946, 2.

² DYSR, File 50/1/7, code 34509, Box H71, 3237F051. If the property was dispersed the Commonwealth maintained equity. 24 Aug 1950.

³ DYSR, File 50/1/7, code 34509, Box H71, 32324 Aug 1950.7F051. 7 March 1951.

⁴ DYSR, File 50/1/7, code 34509, Box H71, 32324 Aug 1950.7F051. 2 Feb 1951, 9 Feb 1951.

⁵ <https://newsboysfoundation.org.au/gary-tippets-history-of-the-newsboys/> accessed 21 Feb 2024

⁶ DYSR, File 50/1/7, code 34509, Box H71, 32324 Aug 1950.7F051. 24 July 1950.

⁷ Improvements may have been made to augment the suggested number of 40 to 70. In 1954 after the CSIRO gave advice, the swimming pool was treated with soda ash and chlorine. DYSR, File 50/1/7, code 34509, Box H71, 32324 Aug 1950.7F051, May 1954.

⁸ *Lilydale Express* 30 March 1951, 5.

⁹ *The Age* 16 April 1951, 6.

communism prominent in western nations. Although Russia was an ally during the Second World War, her actions after the war created an escalating Cold War between Russia and the West.



The main building, the chalet, is referred to as the Bishop's Palace in this postcard taken before the camp was sold to the NFC. MEHG collection

Frank Frith was the first National Fitness Manager of the camp. His predecessors, Mr and Mrs Saunders, working for the Church of England, were given three months' notice to leave their on-site residence prior.¹⁰

Janice Newton

Italian Heritage in the Yarra Valley

History Group members enjoyed a visit to the Lilydale & District Historical Society (LDHS) rooms at the Old Court House in Lilydale on 27 July. Maria McCarthy gave a talk and introduced the exhibition 'Italian Heritage in the Yarra Valley'.

Maria is President of the LDHS and is a member of the Yarra Valley Italian Cultural Group, which produced the book *Dreams from a Suitcase* (2007). Maria explained how the book came to be written. The community realised that the migrant generation was passing away and their stories would be lost with them. At first many were reluctant to talk about the past. The war – families separated – poverty, hunger – who would want to

remember all that? Eventually they were persuaded to contribute their memories and photos.

Two-thirds of the publication costs were covered by producing and selling calendars. The Director of US Buslines was so impressed by the group's fundraising efforts that he contributed the remainder. The book was launched at Parliament House and received the Victorian Community History Award (2010) from the RHSV. Information from the book provided most of the material for the exhibition.

Most of the Italian families in the Yarra Valley originated in the regions of Abruzzo, Piedmont or Calabria. Maria's parents came from two neighbouring villages in Abruzzo that were on either side of the front line during the war. Her father's village was completely destroyed by bombing.

Maria's maternal grandfather came to Australia in 1938, intending to return after a couple of years. The outbreak of WWII made him an enemy alien, unable to return or contact his family, while they did not know whether he was alive or dead. Even after the war they did not hear from him. This was the subject of one of Maria's delightful stories. Maria's mother, who was then a small girl, prayed that her father would be found. She was advised to pray to St Anthony, the patron saint of lost things. She heard the Saint say 'Three days'. Three days later, a letter from her father arrived – it had been delayed in the post for a year. The family was later able to join him in Australia, ending their 10-year separation.

The exhibition includes the Italian families' contributions to farming, business, sport and connections to Melba.

The Yarra Valley Italian Cultural Group has also published Anthony McAleer's book *La Terra Promessa : Italians in the Yarra Valley before 1945*, and organised the Benvenuto Festival.

Karen Phillips

¹⁰ Condition of sale. DYSR, File 50/1/7, code 34509, Box H71, 32324 Aug 1950.7F051. 9 Aug 1950.

Wandin Railway Station Mural Project

John Keane brought this YouTube video to our attention, featuring Jim Brown interviewing people connected to the Wandin Station site Murals. Nick Anchen describes the accident at the Stringybark Creek bridge on the Lilydale to Warburton Rail Trail, close to Mt Evelyn, where four railway employees lost their lives. The video 'is a record of the history of the Lilydale to Warburton Rail Trail and a community project to decorate the former Wandin Station platform with paintings to commemorate rail history'.

<https://youtu.be/KGJqgV4I-U0?si=CdT9Kij0ysmBAXod>

Mural artists Brad Collings and Mary Newham are interviewed about their work. Brad is well known in Mt Evelyn, having worked for Morrison House for several years, and is the creator of the Anzac mural facing the RSL reserve. Mary Newham is a well known local artist who opens her studio at Open Studio events.

Bricks Revisited

from p 5

rail tracks and considerable broken bricks in the excavations, and works were stopped until the significance could be explored. One brickworks was located near where the CFA is on Canterbury Road in the town, and it is thought that these railway tracks were possibly a method of conveying bricks to and from that brickworks.

The Yarra Ranges website for the Cambridge Road brickworks says, 'James Walker ran a small scale brick company from 1891. The bricks were hand made from red porous or white kaolin clay dug at the site. The clay was unique to this location. James sold the bricks from a store on the corner of Mount Dandenong Road and Montrose Road named "Rose Mont". The original brickworks site closed in 1920.'¹¹

James Walker's brickworks had its initial phone number '1', and John wonders if the brickworks

might have been the first place to have the phone connected in Montrose.

John Keane

Vale Sam Abounajm, 'Amigo' to All

The Mt Evelyn community was saddened by the sudden death of Salami 'Sam' Abounajm on 12 August 2024. Sam and his family ran the Red Robin General Store and Lolly Shop in Hereford Road.

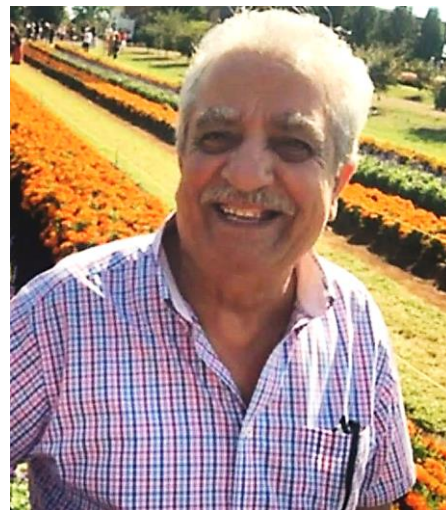


Photo reprinted from *M.E. & You* - www.mtevelyn.news

Born in Lebanon, Sam migrated to Venezuela as a young man. It was there that he met his wife Sue, and they started a family. When the situation in Venezuela became unstable, the

couple moved their young family to Victoria, starting again in a new country with a new language.

After two years they were able to open a milk bar in East Doncaster. Later they moved to McAdam Square, Croydon North, where they opened a milk bar and charcoal chicken shop. They took over the Red Robin in Mt Evelyn from September 2000.

Sam regarded all his customers as friends, greeting everyone as 'Amigo'. After his death, the footpath outside the shop was a mass of floral tributes from grieving friends. Everyone who knew Sam will miss his friendliness and kindness.

Sam, who was 71, is survived by his wife Sue, daughter Nina and son Will. The family intends keep the business going at the Red Robin.

Karen Phillips

¹¹ <https://www.yarraranges.vic.gov.au/Experience/Parks-Recreation/Montrose-Brickworks-Flora-Reserve>

Vale Ann Buckmaster 10/4/1948 – 12/6/2024



The Buckmaster family at *Grantully*, Mt Evelyn (c. 1950). From left, Ernest Buckmaster, Norman, Donald, Merle, Mrs Florence Buckmaster, Ann, Roger and Barbara Botting, niece and children's Nanny.

Ann was the third child and elder daughter of the painter Ernest Buckmaster and his wife Florence.

Ann attended Lilydale High School and the Church of Christ (later Christian Fellowship and now Discovery), and so was a contemporary of many of us here in Mt Evelyn.

During her teenage years she attended a Mt Evelyn Church of Christ Camp at 'Maroondah' in East Warburton, in 1964. Julie Howsen (later Boness) and Ann stand at the centre of the back row in the

photo. It was at that camp that Julia Holmes learned what a talented seamstress Ann was.

In 1964 the family moved to Warrandyte, to a notable house called 'Landfall'. Ann was then studying Commercial Art.

Marg Dewar clarifies that Ann was studying Commercial Art at Swinburne, and that afterwards she worked as a fabric designer.

'She was a beautiful gentle person and a very talented artist who was not really well known due to her father's fame. I knew her quite well at Swinburne Tech where we both did Commercial Art. I later knew her at the Mt Evelyn Christian Fellowship (Discovery Church) where we were in a group of Christian Singles together so she was a lovely friend to me for several years.' Ann attended several dance events at Bolero Dance Studio (the Edge Martial Arts building) run by Marg. Ann was very interested in dancing, and much admired as an excellent Rock 'n Roller. She was also a fearless Singles debater.



Back Row, Left to right: Cheryl Thurrowgood, Julia Holmes (now Atkinson), Peter Hatwell, Carole Hudson, - , David Poole, Lynette Grigg (now Roy), Darryl - (from Wangaratta), Julie Howsen (now Boness), Ann Buckmaster, Dennis Knopp, Kerry Bell, Peter Dowling, Jennifer Knopp, John Wyett.

Middle row, left to right: - , Ken Foord, Eunice Thurrowgood, Betty Grigg, Jim Dow (Pastor), Bert Grigg, Phyllis Thurrowgood, ?Ricky Nielson, ?Michael Brody.

Front Row, left to right: ?Annette Briggs, - , - , - , - , Marion Proctor.

Ann spent about twenty years in the outback with the Carnarvon Aboriginal Mission. When she returned, and Lia Williams (nee Wispelway) caught up with her, Ann was opening her house up to a student (or maybe two?) to be a 'sort of house mother'. Senior students from overseas stayed at her house and she helped them with their

studies. At some time Ann visited Kakanada in India.

Ann caught up with school friends at a Lilydale High School reunion held for her year. She is



Ann Buckmaster, portrait by her father, Ernest Buckmaster. Her father asked her not to cut her hair. Though her hair darkened by her teenage years, this portrait of her as a child is recognisable as the girl and woman we knew.

fondly remembered by all who met her, as a quiet, reserved and gentle person, with a strong Christian faith.

Compiled by Paula Herlihy from information provided by Marg Dewar, Pamela Hipwell, Julia Atkinson, John Wyett, Lia Williams, Joy Richardson, and Paula Herlihy.

Vale Jack (John Charles) Hibberd 12/4/1940 – 31/8/2024

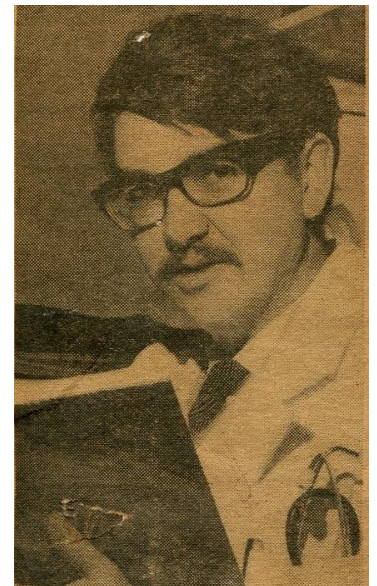
Jack Hibberd was a playwright and a doctor. As a playwright, most readers will probably know him for *Dimboola* (1969). Here in Mt Evelyn we remember him as a locum for Doc (Bill) Hardy in

the 1960s. Pictured is Jack from a newspaper clipping Bill and Gwen saved.

Jack provided further recollections of Mt Evelyn:

Bill was an ebullient and very funny man. He was an excellent GP: kind, resourceful, and incredibly energetic ... I certainly enjoyed my time in Bill's practice and in Mt Evelyn: where incidentally I wrote White With Wire Wheels.

One memory I treasure is that not long after I arrived in the area I had to do a house visit. I entered the dwelling and found a pregnant woman flat on the floor of a kitchen, and groaning. I delivered the baby, and the placenta, but had nothing clinical with me. So I cut the umbilical cord with a bread knife, and tied the cord, employing, as a ligature, the string from a child's cowboy hat. The mother, remarkably, suffered no post-partum infections. On arrival back at the Hardy home, I tossed the placenta to Gwen's big black dog.



I have fond memories of Gwen. She was the perfect foil to Bill and his idiosyncrasies.¹²

Bill was fond of pointing to a scratch on the dining room table and swearing it was made when Jack wrote *White With Wire Wheels*.

Paula Herlihy

Nan Yaxley's Christmas at Billygoat Hill

Nan Yaxley's painting *Christmas at Billygoat Hill* is used on the cover of our main publication, *Tracks to Trails*, and her family, represented by Dr Janice Newton, has suggested we might hold the painting here at Mt Evelyn. More information to come.

¹² Jack Hibberd, email to Paula Herlihy 15/4/2015. *White With Wire Wheels* was the first of his plays to be performed (1967).

Employees Associated with the David Mitchell Cave Hill Estate¹³ D — G

Cave Hill did not keep employee records, though probably David Mitchell (DM) Pty Ltd did keep limited records. The following gives a list of people known to be employed by the Mitchell family from various sources, including *A Child of Cave Hill* [1], *A Diva's Day Out* [2], *Tracks to Trails (2nd Ed)* [3], *The Longest Journey* [4], Mary Golds [5], Franc & Leonie Smith [6], *No Tombstones Vol. 1* [7] and the *Lilydale Express* (LE) per Sue Thompson. Many are from Mt Evelyn. The Cave Hill Social Club is described in TP#130, per Mary Golds nee Miutescu. SUT = Swinburne University of Technology; YRRM = Yarra Ranges Regional Museum; MDDHS = Mt Dandenong and District Historical Society.

Name	Comments	Date(s) & source
Dabrowski, Joe	Friendly with the Miutescus. Widow lives Cave Hill Road [5]	c. 1959 – 1972
Dawes, Frank	b. 1880 or 1881. Red-haired, a great 'practical joker' [6]	c. 1905
Denrehy, M	Farewell from Cave Hill Estate	Oct 30 1903
Dobson, J	Treasurer 1965, 1966. Member Cave Hill Social Club	LE Dec 23 1965, 1966
Dodge, Mr	His daughters were missionaries [5]	c. 1959 – 1972
Doepel, Miss	Governess at Akarana, from Ballarat [1]	
Dolphin, Oliver	b. 1877 Early driver on tramway, Leonie Smith's grandfather [6]	c. 1905 LE Jan 27 1950
Doyle, D B (Mr)	City Office staff – managing director, 26 years' service	LE 1965
Ellis, Bill	Essential services during war, drove winch to pull rock up [5]	c. 1959–1972
Ellis, Joseph	[5]	1915–1916
Ellis, Les	Brother of Bill Ellis	Joan Ellis nee Pinker
Fagan, Jack	Kept the pigs [1]	
Falkiner, Miss	Governess for Nell and sister, c. 50 yo with a weak heart [1]	
Fertelli, Victor	Crushed between two drays. Benefit Parr's Hall incl Powell, Jackman, Baynes, Kinnard, Mitchell (2), Morton (2), Duff, Thornton, McNeil.	LE Nov 25 1887
Feruzza, Tony	Site Manager, David Mitchell (Victoria) Pty Ltd	SUT Oct 2001
Fischer	[1]	
Foster, S J	City Office staff, 32 years' service	LE 1965
Fuller, Isaac	Designed welcome arches at Cave Hill [2][1]. Address to Melba. Lowered on a rope into new cave	LE 14 May 1890, 1902
Fuller, James (?)	Likely to be Isaac; misreported in <i>Weekly Times</i> [2]	15 Nov 1902
Fulton, Roy	1 st class engine driver, tram [1] [3] Winzenreid	1920s, definitely 1928
Furness, David	Train driver [1]	
Gallus, Mr	Labourer (a qualified archaeologist) p101 [3]. See also TP#131	1950s
Gerish, Mr	[5]	c. 1959–1972
Gilson	[1]	
Goodall, Mr	[5]	c. 1959–1972
Goodall, James E	Member Cave Hill Social Club 1965. 28 years in 1965	LE 23 Dec 1965-66
Gordon, Marion	Worked for Blanche Mitchell. Lived in 'Coo-ka', Hereford Road	
Grosse, Bill	[5]	c. 1959-1972

¹³ (Abridged) List compiled by Paula Herlihy

Eye Witness Account of the Mayor of Billygoat Hill

John Martin contacted us recently, and provided some first-hand information on Harold Schultz, the Clifton Hill jeweller who owned a holiday house in Bourke Street Mt Evelyn, and was known as the Mayor of Billygoat Hill.¹⁴

In the 1920s many Melbourne families established holiday homes here, including many at Billygoat Hill from the Clifton Hill and Collingwood areas. John's parents built a home in Bourke Street on the other side of the street from Harold Schultz and the homes of his

relatives. John remembers as a ten year old the truck parked on a flat area of a block just down from his home, where people would sing songs and recite poetry.

He remembers Harold Schultz walking up and down ringing a bell and calling out, 'Come out good people – we're going to have a picnic at the railway dam'.¹⁵ Harold ran yabbie catching competitions at the dam, and if you caught a yabbie you would get a little packet of boiled lollies.¹⁶

Harold Schultz was a customer of John's family's Butcher Shop at Clifton Hill, and an older John had Harold make a ring for his wife.

From Kev's Rain Gauge				
Rainfall (in mm) for Mt Evelyn, McKillop, and Melbourne for the last 3 months.				
	Aug-24	Sep-24	Oct-24	YTD
Mt Evelyn	27.1	83.7	93.6	856.3
McKillop	41.5	87.5	87.4	939.5
Melbourne	28.8	50.0	51.8	489.0
McKillop readings courtesy Jean Edwards. Melbourne figures from Bureau of Meteorology: http://www.bom.gov.au/climate/data/ Kevin Phillips				

Contact Us

President: Paula Herlihy, telephone 9736 2935, pherlihy3@gmail.com

Editor: Paula Herlihy, pherlihy3@gmail.com

Treasurer & Memberships: Tim Herlihy, therlihyau@gmail.com 0419 102 380

Newsletter distribution: Kevin Phillips, kev.phillips@bigpond.com

Newsletter layout: Alison Martin

General enquiries: mtevelynhistorygroup@gmail.com

Postal address: Mount Evelyn History Group Inc., PO Box 289, Mt Evelyn, VIC 3796, Australia.

Website: www.mt-evelyn.net/historygroup

Archived newsletters: <http://www.mt-evelyn.net/thingspast>

Mt Evelyn History Tools Blogsite: <http://mtevelynhistorytools.blogspot.com.au/>

Facebook: <https://www.facebook.com/MtEvelynHistoryGroup2016/>

Opinions expressed in *Things Past* are those of the writers, not necessarily those of Mount Evelyn History Group.

¹⁴ Billygoat Hill is the part of Mt Evelyn now defined by the curved section of Russell Street, and bounded by Forge Road and a straight section of Fernhill Road.

¹⁵ The dam adjacent to Mt Evelyn Station.

¹⁶ Newton, Herlihy & Phillips. *Tracks to Trails: a history of Mt Evelyn*, 2nd Ed. 2001, pp. 55-56 for more information.